

PIERRE MARIE

GIRAUD

GOLD IN CLAY & SAND

Design Miami/  
December 4-9, 2018

Press release



## GOLD IN CLAY & SAND

For Design Miami/ 2018, Pierre Marie Giraud highlights a selection of artworks by Laura De Santillana, Jos Devriendt, Takuro Kuwata, Jihe Murase, Ron Nagle, Barbara Nanning and Sterling Ruby, with a common trait: gold.

The artworks presented demonstrate a vision of gold that goes beyond luxury, greed and power. Throughout a wide range of techniques, their use of gold in all its fascinating versatility contributes to integrate these artists in the history of their medium.

In the hands of Kuwata, gold celebrates the fragility of the clay. His cracked ceramics covered in gold embody a radical take on Kintsugi, the art of mending broken ceramics with gold. Kuwata reveals his strong connection with traditional techniques of Japanese ceramic.

The tea powder containers of Jihe Murase lacquered with gold emphasizes the precious and almost mystical character of the Japanese tea ceremony.

Jos Devriendt covers his lamps in gold from the foot to the lampshade. His insatiable fascination for plays of lights finds in the shine and glow of gold a new field to explore. He does so in a series of lamps with sleek surfaces and controlled curves.

Laura de Santillana and Barbara Nanning are both combining glass and gold leaves in their artworks. In Nanning's pieces gold is applied on the surface. She glides and polishes the inner part of thick hand-blown vessels, creating the illusion of a container full of liquid metal.

Laura de Santillana fuses the gold leaves in glass. In small touches like brushstrokes the gold makes visible the transparent glass and its contours.

Ron Nagle and Sterling Ruby carry on a tradition of American ceramicists-artists through their use of experimental techniques and their taste for shiny glazes and glimmering lustre. In Nagel's pieces the small gold elements embed the scarcity of gold nuggets. On the other hand, the glimmering Hearts and Clubs of Ruby make of the latter a contemporary Midas.

Design/Miami  
December 4-9, 2018

**Booth G12**

**Artists exhibited**

Yo Akiyama, Laura de Santillana, Jos Devriendt, Joseph Dirand, Alev Ebüzziya Siesbye, Jean Girel, Karin Gulbran, Kazunori Hamana, Valérie Hermans, Daisuke Iguchi, Yoshiro Kimura, Elisabeth Kley, Takuro Kuwata, Nancy Lorenz, Morten Løbner Espersen, Tony Marsh, Kristin McKirdy, Shozo Michikawa, Ritsue Mishima, Jihei Murase, Ron Nagle, Barbara Nanning, Magdalene Odundo, Yoichi Ohira, Rick Owens, Nadia Pasquer, Sterling Ruby, Takayuki Sakiyama, Adam Silverman, Bente Skjøttgaard, Martin Szekely, Chikuunsai IV Tanabe, Thaddeus Wolf

**Preview Day/ By Invitation Only**

Tuesday, December 4/

Collectors Preview/ 12–5pm

Opening Night Preview/ 5–7pm

**Vernissage/**

Wednesday, December 5/ 10am–12pm

**Public Show Days/**

Wednesday, December 5/ 12–8pm

Thursday, December 6/ 10am–8pm

Friday, December 7/ 11am–8pm

Saturday, December 8/ 12–8pm

Sunday, December 9/ 12–6pm

*First page*

**Takuro Kuwata** *Untitled*, 2017

Porcelain, stone, glaze, pigment, gold; 19,5 x 44,5 x 35 cm / 7.7 x 17,5 x 13.8 in

Unique

PIERRE MARIE

GIRAUD



**Ron Nagle** *Sosumo*, 2012  
mixed media; 7,6 x 17,7 x 8,2 cm / 3 x 7 x 3,3 in  
Unique

PIERRE MARIE

GIRAUD



**Ron Nagle** *Babe Magnate*, 2012  
Mixed media; 26 x 13,3 x 6,9 cm / 10,3 x 5,3 x 2,8 in  
Unique



PIERRE MARIE

GIRAUD



**Takuro Kuwata** *Tea bowl*, 2018  
Ceramic, glazes, 10,4 x 15,9 x 9,4 cm / 4 x 6.2 x 3.7 in  
Unique

PIERRE MARIE

GIRAUD



**Takuro Kuwata** *Tea bowl*, 2018  
Ceramic, glazes; 13,2 x 18,2 x 17,1 cm / 5.2 x 7 x 6.7 in  
Unique

PIERRE MARIE

GIRAUD



**Laura de Santillana** *Untitled (Etoile)*, 2017  
Glass, gold leaf; 27 x 18 x 2 cm / 10.6 x 7 x 0.8 in  
Unique



PIERRE MARIE

GIRAUD



**Laura de Santillana** *Untitled (Jardins)*, 2017  
Glass, gold leaf; 28,5 x 18 x 3 cm / 11.2 x 7.1 x 1.2 in  
Unique

PIERRE MARIE

GIRAUD



**Jos Devriendt** *Night and Day 151*, 2018  
Stoneware, gold enamel; 11 x 8 x 14 cm / 4.3 x 3.1 x 5.5 in  
Unique

PIERRE MARIE

GIRAUD



**Jos Devriendt** *Night and Day 150*, 2018  
Stoneware, gold enamel; 34 x 23 x 23 cm / 13.4 x 9 x 9 in  
Unique

PIERRE MARIE

GIRAUD



**Sterling Ruby HEART (6835), 2018**

Ceramic, glazes; 55,2 x 35,9 x 4,1 cm / 21 3/4 x 14 1/8 x 1 5/8 in

Unique



PIERRE MARIE

GIRAUD



**Sterling Ruby Ashtray 478, 2018**

Ceramic, glazes, 3,8 x 21,9 x 17,1 cm / 1 1/2 x 8 5/8 x 6 3/4 in  
Unique

PIERRE MARIE

GIRAUD

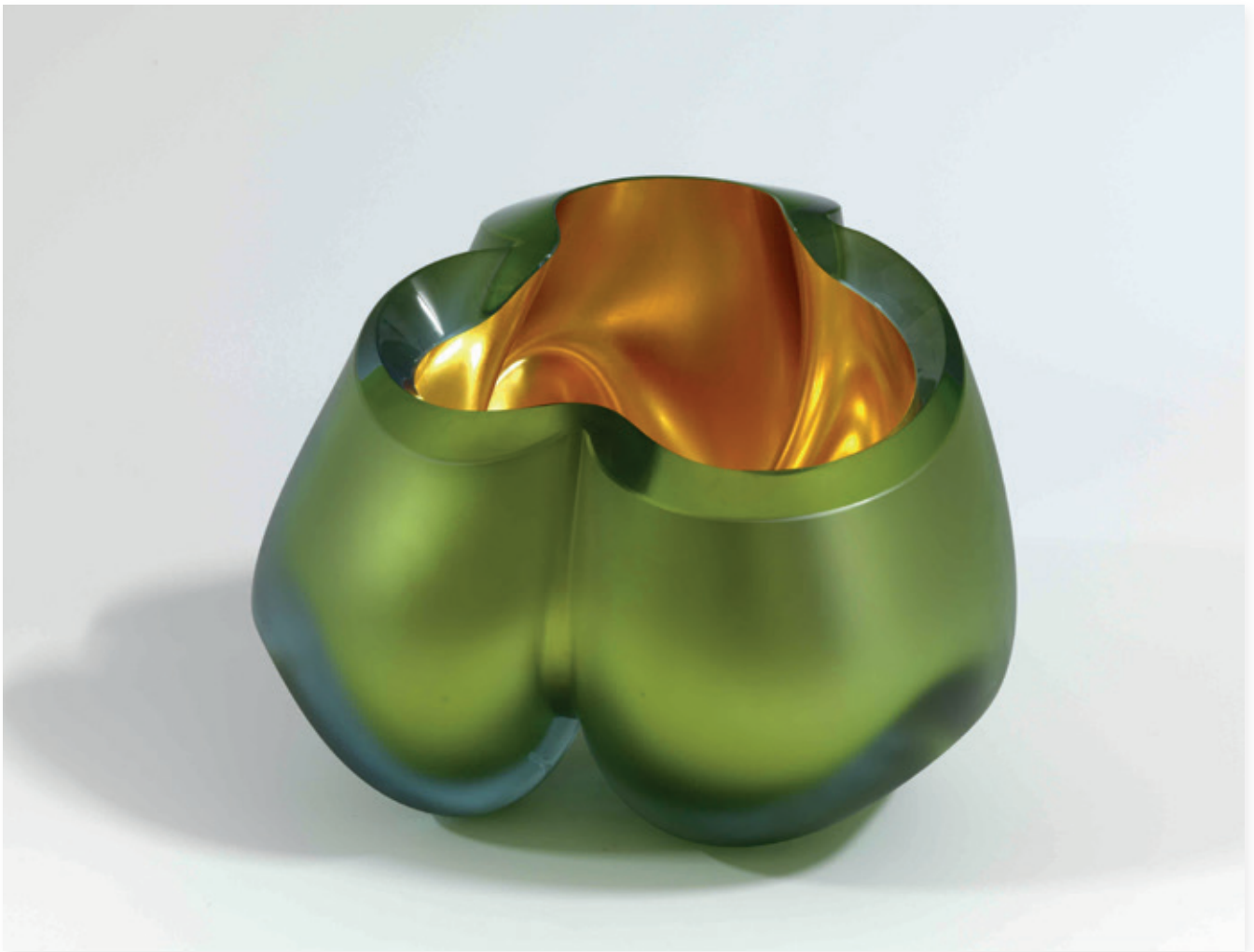


**Sterling Ruby CLUB (6842)**, 2018

Ceramic, glazes; 53,3 x 14,6 x 5,1 cm / 21 x 5 3/4 x 2 in  
Unique

PIERRE MARIE

GIRAUD



**Barbara Nanning** *Untitled*, 2016

Hand-blown sandblasted glass, gilded 23,5kt gold; 20 x 26 x 25 cm / 7.9 x 10.2 x 9.8 in  
Unique

PIERRE MARIE

GIRAUD



**Barbara Nanning** *Untitled*, 2016

Hand-blown sandblasted glass, glided with gold; 29 x 26 x 19 cm / 11.4 x 10.2 x 7.5 in  
Unique



PIERRE MARIE

GIRAUD



**Jihei Murase** *Untitled*, 2017  
Lacquered wood, various dimensions  
Unique

PIERRE MARIE

GIRAUD

For more information about the artists and their works and for high-resolution images, please contact **[charlotte@pierremariegiraud.com](mailto:charlotte@pierremariegiraud.com)**

Thank you